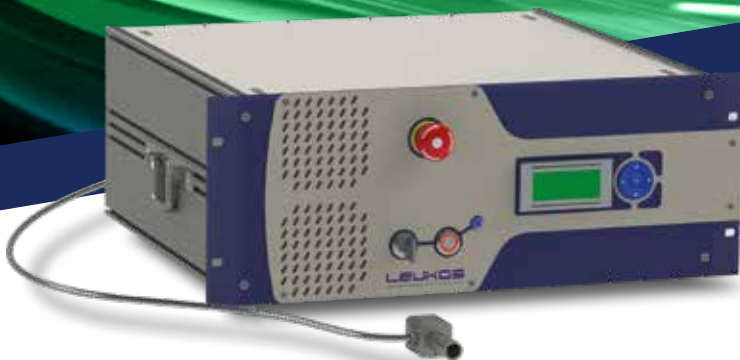


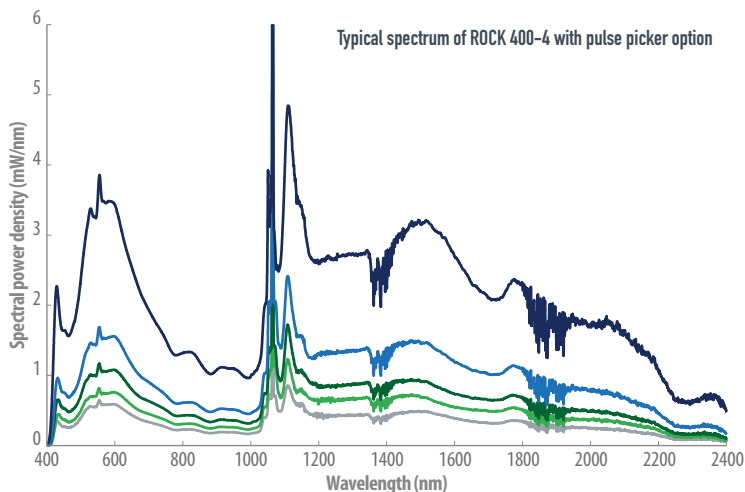
# ROCK

## HIGH POWER SUPERCONTINUUM LASER

— Supercontinuum lasers  
— SCIENTIFIC  
— HIGH-POWER



Based on high repetition rate mode-locked lasers, **ROCK** operates at tens of MHz repetition rate with short pulse durations on the order of picoseconds.



### FEATURES

- From visible to NIR 410 - 2400 nm
- MHz repetition rate
- Picosecond pulse width
- Total average power up to 6 W
- Visible power up to 1200 mW
- Spatially singlemode
- Maintenance-free

### APPLICATIONS

- Microscopy
- Multiphoton fluorescence
- Spectroscopy
- OCT
- Metrology
- LIDAR



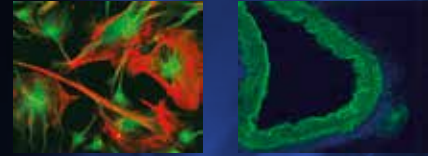
**LEUKOS**  
Make a bright future

# ROCK

## HIGH POWER SUPERCONTINUUM LASER

Ergonomic and functional, **ROCK** provides a high average power with stable broadband spectrum which can be easily combined with our filtering solutions to provide a convenient tunable laser. An optional pulse-picker can also be integrated in order to vary the nominal repetition rate of the laser.

- Supercontinuum lasers
- SCIENTIFIC
- **HIGH-POWER**



OPTICAL SPECIFICATIONS		ROCK 400	ROCK 450	ROCK 480
Spectral bandwidth	minimum	< 410 nm	< 450 nm	< 480 nm
	maximum	> 2 400 nm	> 2 400 nm	> 2 400 nm
Total average power		2, 4, 5 W	2, 4, 5 W	2, 4, 6 W
Total visible power		Up to 1200 mW		
Repetition rate		40 or 60 MHz (20 and 80 on request)		
Seed pulse width		~ 6 ps		
Power stability		< +/- 1 %		
Spatial mode		Singlemode		
Polarization state		Unpolarized		
Output		FC/APC collimator (~ 1m armored cable)		
Synchronization output		Photodiode and NIM		
Interlock connector		2-pin LEMO		
OTHER SPECIFICATIONS				
Control interface		Front panel		
Operating temperature		+15°C to +35°C non condensing		
Weight		< 9 kg		
Dimensions (LxWxh)		430x330x180 mm		
Power requirements		100-240 V, 50/60 Hz		

### ADDITIONAL EQUIPMENT

Achromatic collimated output

Easy fiber coupling with Pop

Tunable filters : AOTF, monochromators, custom

**LEUKOS**  
Make a bright future

+33 (0)5 87 20 00 25

contactus@leukos-systems.com

[www.leukos-systems.com](http://www.leukos-systems.com)

All specifications are subject to change without notice

### OPTION

Pulse picker down to 250 kHz

Optimization of spectrum in  
the NIR 1100-2400nm



CAUTION – VISIBLE AND INVISIBLE  
LASER RADIATION AVOID EYE AND  
SKIN EXPOSURE TO DIRECT OR  
SCATTERED RADIATION  
CLASS 4 LASER PRODUCT